

OssiMend® Block

Bone Graft Matrix

All-Natural Mineral-Collagen Bone Grafting Matrix

- Anorganic bone mineral and type I collagen
- Compression resistant and absorbent
- Highly purified, biocompatible matrix
- Osteoconductive
- Osteoinductive and Osteogenic when used with autogenous bone marrow
- Resorbable
- Excellent handling-flexible when wet



OssiMend® Block Bone Graft Matrix is a mineral-collagen composite matrix processed into blocks for surgical implantation for the repair of bony defects in the spine, extremities and pelvis. The principal components of OssiMend® Block are anorganic bone mineral and type I collagen derived from bovine. The mineral particles are dispersed within collagen fibers forming a three dimensional porous matrix consisting of about 80% bone mineral and 20% collagen. OssiMend® Block is provided as a sterile, dry material that is hydrated with autogenous bone marrow at the point of use. OssiMend® Block can be cut into shapes and is designed to retain its shape and physical integrity following implantation into a bony site. OssiMend® Block is fully resorbed during the natural process of bone formation and remodeling. OssiMend® Block is part of the OssiMend® bone graft family of products including OssiMend® Pads and Strips, OssiMend® Putty, OssiMend® Conformable Putty, and OssiGuide™ Cancellous Granules that can be used as an augmentation to autogenous bone graft material.

Catalog No.	Dimensions			Quantity
	Length, cm	Width, cm	Thickness, cm	
MCCB0524	6.25	2	0.4	5 cc, 1 Strip
MCCB10	6.25	2	0.8	10 cc, 1 Strip
MCCB20	6.25	2	0.8	20 cc, 2 Strips
MCCB0514	12.5	1	0.4	5 cc, 1 Strip
MCCB1004	12.5	2	0.4	10 cc, 1 Strip
MCCB2004	12.5	2	0.4	20 cc, 2 Strips

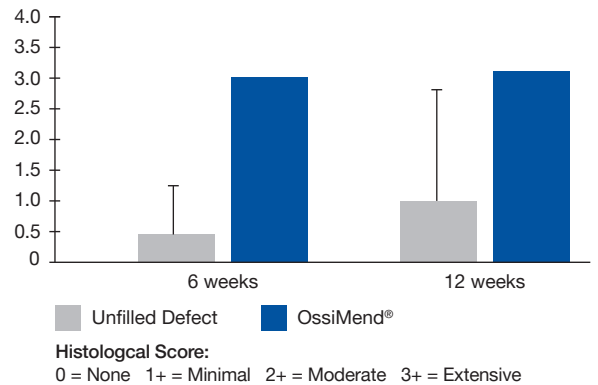
OssiMend[®]

Bone Graft Matrix

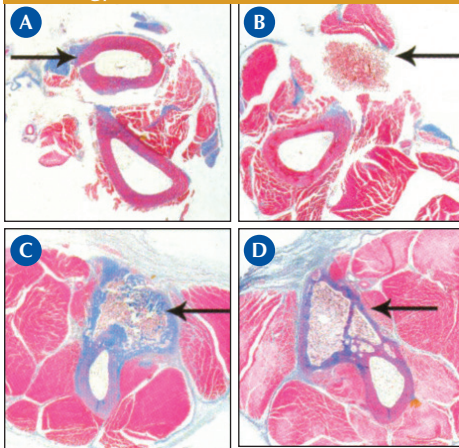
In Vivo Study in a Rabbit Radius Defect Model¹

- OssiMend[®] soaked with bone marrow
- Critical size defect in the radius bone
- Unfilled defects as control
- Endpoints were histology and radiography
- New bone formation at 6 & 12 weeks

New Bone Formation of OssiMend[®] (6 & 12 weeks)



Histology of OssiMend[®] (6 & 12 weeks)



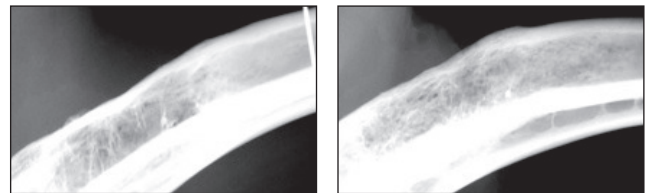
Histology of Radius (→)

- Intact radius, no defect
- Showing OssiMend[®] in place at day zero
- OssiMend[®] / new bone at 6 weeks
- OssiMend[®] / new bone at 12 weeks

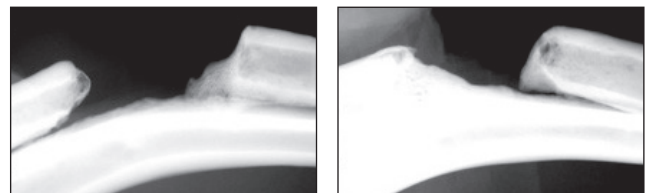
OssiMend[®] is a registered trademark of Collagen Matrix, Inc.

Radiographs of OssiMend[®] (6 & 12 weeks)

OssiMend[®]



Unfilled Defect



6 weeks

12 weeks

¹ Speer, D, et al. A Collagen-Anorganic Bone Composite for Bone Repair: Part II: In Vivo Study in a Rabbit Radius Defect Model, *Society for Biomaterials*, Poster 525 Pittsburgh, PA, 2006.



Oakland Corporate Headquarters | 15 Thornton Road | Oakland, NJ 07436, USA
Tel 201.405.1477 | Toll Free 888.405.1001 | Fax 201.405.1355

www.collagenmatrix.com